

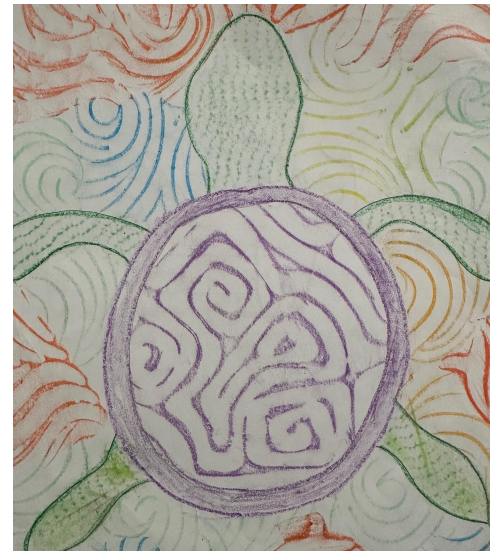
# Cambrian Arts 23-24




*Line Prints*



*Frottage*





**PROPOSITION 28:**  
**THE ARTS  
AND MUSIC  
IN SCHOOLS**

**Funding Guarantee  
and Accountability Act**

**CREATE CA**

As a condition of receiving funds, LEAs must do the following annually:

- Certify that funds are used to provide arts education, and that funds expended in the prior fiscal year were used for that purpose
- Certify that funds received will be used to supplement funding for arts education programs and that funds received in the prior fiscal year were used for that purpose
- Certify that no more than 1% will be used for an LEA's administrative expenses and that funds received in the prior fiscal year were used within that limit
- Submit an annual report that describes the arts education programs funded and specifies how funds were utilized



Discovery



Imagination





*Social Responsibility*



*Creativity*





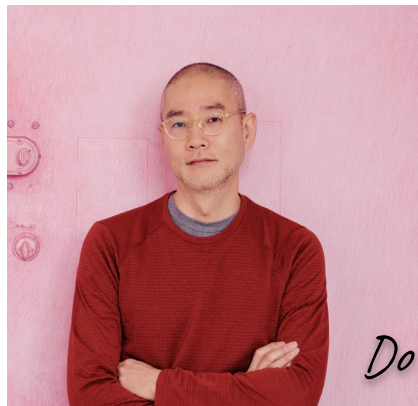
*Jacob Lawrence*



*Jane Kim*



*Ana Serrano*



*Do Ho Suh*



## Artist Connections

We focus on a selection of diverse and contemporary artists to inspire student work at each grade level.

## Our Celebrations:

The launch of our district art program has been a huge success. Students are excited to explore different art forms and teachers are happy to see their enthusiasm. Our district Paraeducators have been essential in making sure every student gets the support they need and supplies are prepared for the quick turnaround between classes. With over 15 art sessions offered per class the program has been a great opportunity for students to express themselves and explore the creativity of visual arts.





## Setting the Foundation:

The 23-24 school year has laid the groundwork for developing a comprehensive, standards-based district-wide art curriculum. Access for all students was prioritized, fostering creativity and skill development. As we look ahead to the next school year, students will build upon the foundation laid this year, expanding their knowledge and skills in art. With each passing year, students will continue to exponentially grow and develop as artists, benefiting from the sequential and scaffolded nature of the curriculum.



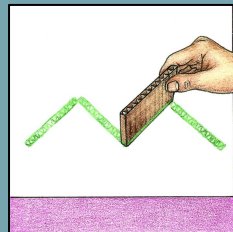
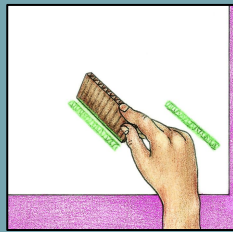
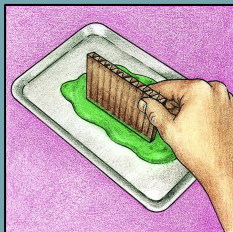


**2nd Grade Close-Up Flowers**  
Artist Connection: Georgia O'Keeffe

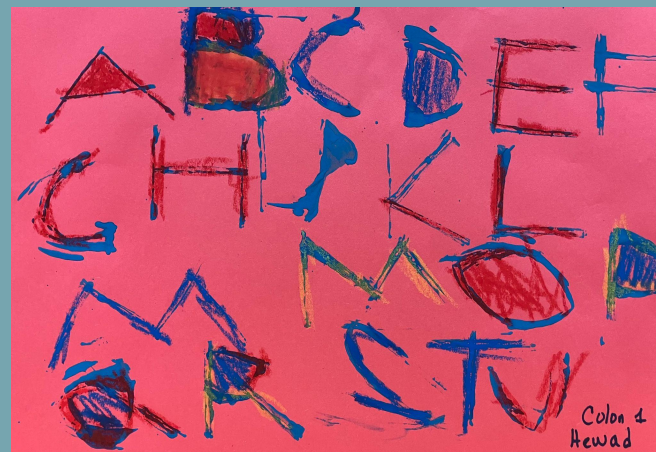


**5th Grade Emotive Landscapes**  
Artist Connection: Richard Mayhew





Davis Publications



Kindergarten - Lines and Letters



2nd Grade - A Beautiful Place



5th Grade - Things We Care About





4th Grade - California Halibut



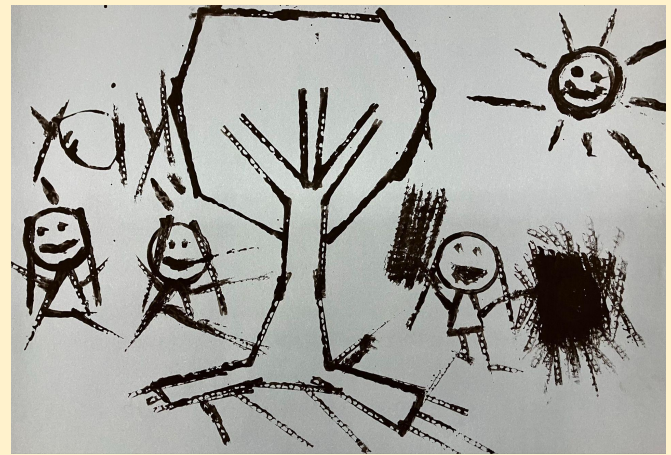
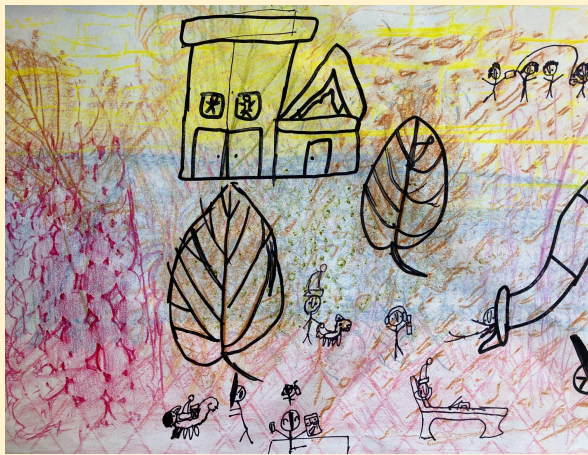
TK - Ocean Sunfish



5th Grade - Giant Sea Bass



*A Story About Afiya by James Berry & Anna Cunha*





School	Enrollment	Salaries (Min. 80%)	Other (20%)	Total
Cambrian (Bagby & Steindorf)	974	\$92,945	\$23,236	\$116,181
Fammatre	465	\$48,260	\$12,065	\$60,325
Farnham	349	\$35,057	\$8,764	\$43,821
Sartorette	281	\$28,794	\$7,199	\$35,993
Price	870	\$86,699	\$21,675	\$108,374
<b>Projected Total</b>		<b>\$291,755</b>	<b>\$72,939</b>	<b>\$364,694</b>

Proposition 28 - Arts Education Funding  
 Estimated 2023-24 Allocation

---

# 2023-24 Prop 28 Expenditures



## 2.0 FTE Art Teacher

- 1.0 FTE @ 3 Bagby, Farnham, and Sartorette (TK-5)
- 1.0 FTE @ Price MS, Steindorf K-8, and Fammatre (TK-8)
- Projected Expenditure: \$302,201 (83%)

## 2.0 FTE Art Paraeducator

- Projected Expenditure: \$112,654 (31%)

Expenditure for Personnel: \$414,855 (111%)

Estimated Annual Art Instructional Materials/Supplies: \$ 30,000 (8%)

Estimated Total Expenditures: **\$444,855 (119%)**

—

# Questions?

