A photograph of two hands, one from a child and one from an adult, gently cupping a tree trunk to form a heart shape. The tree bark is dark and textured. The background is blurred, showing other people and a white wall.

# Water Conservation

Cambrian School District  
*November 17, 2022*

Water conservation is required as California, and the western United States are going through a “mega-drought”. The District in its desire to conserve water and be good stewards of our funds, is working on various areas to implement changes to save water.

Overall water conservation is a much more powerful and integrated approach to drought tolerance because it includes measures such as those listed below, and it qualifies the District for grants and funding.



Bolsa Grande High School water-wise makeover, featuring California native plants that conserve water and reduce runoff pollution

# Water Conservation Measures

- Smart Water Billing
  - Sub-metering rentable assets
  - Buildings
  - Fields
- Smart Irrigation Systems
  - Employee training
  - Timers
  - Irrigation heads
  - Ground moisture sensors
  - Line leak detectors



# Hardscape and Landscape

❖ **Reduce Lawn Areas:** Front of school sites, quads, and fields

❖ **Decomposed Granite:** Paths with seating & tables around field perimeters

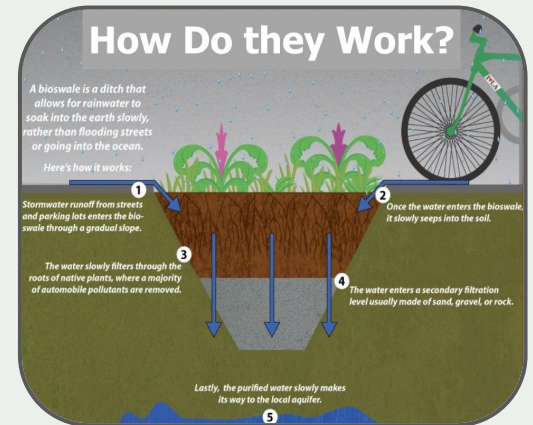
❖ **Increase Concrete:** Learning areas in quads

❖ **Increase Parking:** Where necessary & economically feasible

❖ **Increase:** Planter beds with native plants

❖ **Be Purposeful:** Tree planning & planting for ground protection & aesthetic shade

❖ **Rainwater Swales:** Simple shallow, low depressions in the ground designed to encourage the accumulation of rain during storms





# Touchless & Air Assist

---

- Water handles
- Water closets
- Urinals
- Sinks
- Fountains
- Hand dryers

# Maintenance

---



Employee  
Certifications



Employee  
Training



Policy and  
Procedures

# Grants and Funding

---

Lawn areas which can be removed and converted into another use are estimated to reasonably total between 15,000 square feet, or more per site. Each District site is eligible for up to \$100,000 in rebates through the Landscape Rebate Program (LRP) from Valley Water. The LRP offers rebates for converting from lawn to low water use plants, converting lawn to mulch (the newest component intended to help large sites comply with the ban on irrigating non-functional turf), upgrading irrigation equipment, and converting to in-line drip irrigation. The areas include front lawns, quad lawns, and even back lawns. The removed and replaced lawn would be limited to a portion of a designated area; percentage and areas need to be determined per site.

# Questions?

---

